

Edinburgh Hill Penthouse

Region: Edinburgh Sleeps: 7 - 10

Overview

Edinburgh Hill Penthouse makes a luxurious base for those wishing to explore the wonderful city of Edinburgh. It holds a fantastic location just a short distance from the city centre, while Murrayfield Stadium and Edinburgh Zoo are situated just a few minutes' walk away.

The modern apartment has been designed with high attention to detail, boasting sophisticated interiors complete with sumptuous furnishings. The penthouse is great for families or a group of friends, comfortably accommodating up to ten guests across four spacious bedrooms and two sofa beds. The bright open-plan entertaining area comprises of the living room, kitchen and dining area and benefits from French doors which lead out onto a south-facing balcony with excellent views over Carrick Knowe Golf Course. The kitchen benefits from high-end NEFF appliances, while the large smart TV is perfect for a cosy movie night after a long day spent exploring the city! Two of the bedrooms benefit from having en-suite bathrooms as well as superking-size beds. The remaining bedrooms, a third superking and a single room share the use of a luxury family bathroom which comes complete with both a Jacuzzi bath and a TV!

Edinburgh Hill Penthouse is set within beautifully landscaped gardens and is just a short stroll from local beauty spots such as Corstorphine Hill Nature Reserve.

Facilities

Townhouse/Apartment • Ideal for Kids • Ideal for Teens • Wi-Fi/Internet • Walk to Village • Walk to Restaurant • <1hr to Airport • BBQ • Satellite TV • Cable TV • Lift • Working Fireplace • Heating • Cot(s) • High Chair(s) • Golf Nearby • Outstanding Landscapes • Outdoor Pursuit & Activities • Tourist Towns & Villages



Interior & Grounds

The accommodation is set out over one level and is accessed via an elevator with step-free access.

Interior Grounds

- Open-plan living area with 50" 4k HD Smart TV, dining facilities and balcony access
- Open-plan modern kitchen with NEFF appliances, 5 ring gas burners, a steam cooker and wine chiller
- Master bedroom with super-king size bed and en-suite bathroom with shower, radio, WC and washbasin
- Bedroom with super-king size bed and en-suite bathroom with shower, WC and washbasin
- Bedroom with super-king size bed
- Bedroom with single bed
- Family bathroom with Jacuzzi bath, TV, WC and washbasin

Exterior Grounds

- Private balconies
- Shared gardens

Additional Facilities

- Plenty of unrestricted parking
- Iron
- Hairdryers
- Crib & High chair

**The super-king beds can be set up as twin rooms with two singles should that be required.*

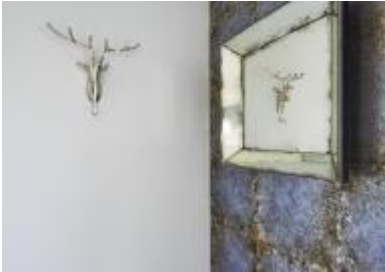


Location & Local Information

Edinburgh Hill Penthouse holds a fantastic location for those looking to explore Edinburgh. Edinburgh Zoo, Murrayfield Stadium & beauty spot Corstorphine Hill Nature Reserve are all just a short walk away. The vibrant city centre is just a ten minute car journey away and offers something for everyone with excellent shopping, nightlife and a range of historic attractions to explore. For those not bringing a car, there is a bus stop just a 5-minute walk from the penthouse which has a great service into Edinburgh city centre.

Local Amenities

Nearest Airport	Edinburgh Airport (7.4km)
Nearest Town/City	Edinburgh (7.5km)
Nearest Supermarket	Tesco Extra (2km)
Nearest Restaurant	Corstorphine Inn (1km)
Nearest Golf	Carrick Knowe Golf Course (1km)



What Oliver loves...

- The private balconies make the perfect place to enjoy your morning cup of coffee while enjoying fantastic views over Carrick Knowe golf course, the Edinburgh Skyline and the Pentland Hills in the distance
- Perfect spot for animal lovers with Edinburgh Zoo & Seaside Centre situated just a short stroll away!
- The apartment is located in a relaxed part of town; however the buzzing city centre is just a short car journey away
- Edinburgh Airport is conveniently located just 10 minutes away, while the apartment also benefits from excellent motorway links

What you should know...

- While Edinburgh Zoo and Murrayfield Stadium are within walking distance, a car or public transport will be needed in order to reach the centre of town
- While the four bedrooms can sleep up to seven guests, those travelling in groups of ten would need to make use of the two sofa beds in the living room

Terms & Conditions

- Security deposit: Please note that there is a security deposit of £200 in case of any damages
- Arrival time: Between 3pm and 8pm
- Departure time: 11am
- Energy costs included?: Yes, included in rental price
- Linen & towels included?: Yes, included in rental price
- Pets welcome?: Sorry, no pets
- Smoking Allowed?: No
- Other Ts and Cs: No parties or events will be accepted at this property