

Manse Manor

Region: East Lothian Sleeps: 10 - 11

Overview

Amid one acre of lush lawns, mature trees and colourful borders that offer total privacy, Manse Manor is a fabulous Scottish manor house built in 1780 in the Scottish Baronial style. With five bedrooms, two spacious living rooms, a rather grand dining room and a large kitchen diner, it is the perfect pick to bring the generations together or to celebrate a special occasion with your favourite friends. This gorgeous manor house is a haven for hunkering down, the perfect abode for a spot of switch off, yet the vibrant City of Edinburgh is only thirteen minutes away by train. Manse Manor is located in a lovely tranquil spot in Prestonpans, close to the superb Muirfield Golf Course and within very easy reach of North Berwick. You have the best of both worlds when staying at Manse Manor, the social and shopping lifestyle of Edinburgh, yet blissful relaxation and rejuvenation as you take on the roles of Lord and Lady of the Manor.

The captivating City of Edinburgh enjoys a wealth of top attractions for the whole family, excellent shopping opportunities and sensational fine dining. This ever-popular city is a remarkable place to visit with a stunning backdrop of the dramatic Arthur's Seat, the Pentland Hills, and Edinburgh's waterfront. You can take a cruise on the River Forth, explore the ancient castle, shop until you drop, wander through the cosmopolitan streets of the Port of Leith, listen to bagpipes and dine until you burst. North Berwick is a delightful seaside town on the south shore of the Firth of Forth. The town became a fashionable holiday resort in the nineteenth century due to its two delightful sandy bays. It boasts an eclectic mix of shops, cafes and bars, world-renowned golf courses, stunning coastal views, and the popular, five-star Scottish Seabird Centre.

At Manse Manor, you will relish its beauty and generous rooms where there is charm and character in abundance. Mostly it is full of modern furnishings with the odd vintage number thrown in for good measure. Cavernous light-flooded spaces offer ample living, dining and sleeping spaces. Most of the rooms enjoy open fireplaces where you can chuck a log on the fire for a crackling atmosphere.

The main living room is delightful with sumptuous modern sofas, period features such as its original recessed shelving, and a piano where you can enjoy a tinkle of the keys. Next door, the sitting room enjoys a corner sofa, another gorgeous fireplace, huge windows with traditional shutters and a smart television with Netflix and Amazon Prime so that you can cosy up and



watch a movie. It is great having two living spaces as the little ones can chill at the end of a busy day while the adults can chat and plan their week. The dining room is perfect for a formal dinner with its traditional table and chairs, fireplace and gorgeous garden views. The enormous country kitchen diner enjoys a warm rustic feel and excellent appliances, including a huge stainless steel range cooker and wood-burning stove. It is perfect for your hearty Scottish breakfasts.

There are five beautifully presented bedrooms and four shared bathrooms. With gorgeous fireplaces, plush soft furnishings and comfy beds, they are heavenly nests where you will enjoy the sleep of kings. In addition, the house enjoys a sofa bed where you could sleep and an extra guest. The bedrooms all offer kingsize or super kingsize beds aside from one, which has a trundle bed which can be set up as two singles. This room is ideal for children. One of the bathrooms offers a bath and shower, another a bath, and the last two enjoy showers.

Manse Manor is enveloped by a beautifully landscaped garden where you can enjoy a tippie or two as you bask in the golden hour sun. You will feel the tranquillity fold around you as you relax in absolute peace and quiet. Children are happy when they discover the football nets, basketball hoops and tennis nets that are provided for entertainment. There are over an acre of private walled gardens, so you will enjoy your own slice of Scottish paradise. The gardens are very colourful and very pretty. There are great spots for picnics and family games.

When you can bring yourselves to leave Manse Manor and its lovely grounds, there are lovely beaches nearby, the train into Edinburgh or you can opt for a game of golf. Whether you are looking for a peaceful family holiday or an action-packed trip exploring Scotland's rich history and an endless list of monuments, ancient buildings and museums, Manse Manor is a fabulous choice.

Facilities

Manor • Easy By Train • Beach Nearby • Ideal for Kids • Ideal for Teens • Wi-Fi/Internet • Walk to Beach • Walk to Village • Walk to Restaurant • <1hr to Airport • Ideal for Xmas/NY • Smart TV • Indoor Games • Outdoor Games • Working Fireplace/Woodburner • Heating • Cot(s) • High Chair(s) • Parking Space • Walking/Hiking Paths • Golf Nearby • Tennis Nearby • Cycling • Outdoor Pursuit & Activities • Tourist Towns & Villages • Historical Sites

Interior & Grounds

The Manor

Basement Floor

- Kitchen
- Utility room
- Living Room
- Bathroom with a shower

Ground Floor

- Sitting room
- Dining room, seats ten
- Living room

First Floor

- Bedroom with a super king-size bed
- Two bedrooms with a king-size bed
- Bedroom with a king-size bed and a Jack and Jill en-suite bathroom
- Bedroom with a single bed and one-floor mattress
- Two bathrooms

Outdoor Grounds

- Dining table, seats ten
- Accessible parking
- Football nets
- Basketball Hoop
- Tennis Nets
- Swing

Additional Facilities

- Wi-Fi
- Smart TV's with Netflix & Amazon Prime
- Fireplace in every room
- Cot and highchair (please request)
- Piano
- Heating



Location & Local Information

Manse Manor enjoys a fabulous location at Prestonpans, just outside of Edinburgh. It is a very easy train ride or drives into the city centre. The Royal Musselburgh Golf Club and Longniddry Tennis Club are close by.

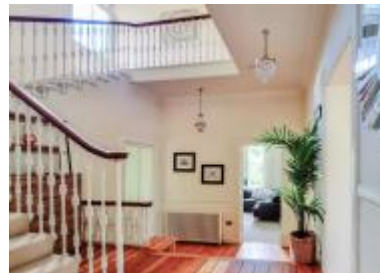
If you haven't visited the City of Edinburgh before, you will quickly fall in love with it. The city enjoys a wealth of top attractions for the whole family, excellent shopping opportunities and a wonderful array of outstanding restaurants and bars. At the top of the Royal Mile on the top of Castle Rock, you can visit the very famous Edinburgh Castle, the number one visitor attraction in Scotland and the most iconic building in the city. It looks even more impressive at night with clever lighting, so you should bag a table in one of the rooftop restaurants, such as the Thai Chaophraya, asking for a table in the glass box. Perched on the top of an extinct volcano, the castle and its esplanade offer astonishing views of Edinburgh. You can visit St Margaret's Chapel, The National War Memorial and the Half Moon Battery. The regal Crown Square is home to the Grand Hall and Scotland's crown jewels.

Visitors discover Edinburgh's grisly history at The Edinburgh Dungeon, face to face with Scotland's ravenous cannibals and infamous killer duo Burke and Hare. There are plenty of ghost walks and light-hearted fun with immersive, actor-led shows and state-of-the-art special effects. Edinburgh is especially popular during the August Festival and at Christmas and New Year.

Edinburgh is home to three excellent galleries, The National Gallery on the Mound, the Portrait Gallery on Queen Street and the Gallery of Modern Art. The Scottish National Gallery boasts some of the world's finest art by the likes of Rembrandt, Monet and Raphael. The Scott Monument is the largest monument to a writer in the world, celebrating the Scottish novelist Sir Walter Scott. It was built in the 19th century and is one of the most striking landmarks on the Edinburgh city skyline. Visitors can climb the 287 steps to enjoy far-reaching views of the city and surrounding countryside. The Holyrood Palace is The Queen's official residence in Scotland. Some areas of the Palace are open to the public, including the State Apartments, the Throne Room and the Morning Drawing Room.

The Royal Botanic Gardens at Stockbridge is a twenty-minute walk from the city centre. You will discover a beautiful collection of more than one hundred thousand plants and seventy acres of stunning green space.

The Royal Yacht Britannia was Her Majesty The Queen's floating palace for over forty years and is one of the city's best attractions. You can enjoy a complimentary audio tour and follow in the footsteps of royalty exploring this wonderful yacht that is permanently moored beside Ocean Terminal.



Calton Hill offers the most amazing views of the city. At the base, you can dine at Edinburgh's acclaimed restaurant, The Lookout by Gardener's Cottage. The panoramic vistas from Calton Hill of Arthur's Seat with the Craggs behind Holyrood Palace and the Parliament, Leith and the Firth of Forth, Princes Street and the New Town and the Royal Mile climbing to Edinburgh Castle have astonished and inspired visitors for centuries. Calton Hill is famous for its collection of historical monuments, including the National Monument, inspired by the Parthenon in Athens, the Nelsons Monument and the City Observatory, of which Calton View House is part.

North Berwick is a delightful seaside town, half an hour outside of Edinburgh. It has an eclectic mix of shops, fish and chip cafes, bars and other restaurants. North Berwick enjoys striking views out to the Firth of Forth and Bass Rock and the world's largest northern gannet colony. There are playgrounds, putting greens, tennis courts and plenty of boat trips to keep you entertained, not to mention the golf. The town is famous for its award-winning Scottish Seabird Centre, where you can zoom in on the amazing wildlife on the Firth of Forth islands.

Local Amenities

Nearest Airport	Edinburgh Airport (32.4 km)
Nearest Train Station	Prestonpans Train Station (1 km)
Nearest Village	Port Seton (1.7 km)
Nearest Town/City	Musselburgh (5.6 km)
Nearest Restaurant	Croalla's Italian Kitchen (5.6 km)
Nearest Bar/Pub	The Gothenburg (900 m)
Nearest Supermarket	Lidl (450 m)
Nearest Beach	Prestonpans Beach (800 m)
Nearest Golf	Royal Musselburgh Golf Club (2.4 km)

Nearest Tennis

Longniddry Tennis Club
(7 km)

What we love

- Manse Manor is very spacious, the perfect pick to bring the generations or your favourite friends together to celebrate a special event or birthday
- The house is surrounded by more than an acre of gorgeous landscaped gardens with plenty of entertainment for the younger set
- You will relax in total seclusion and peace and quiet yet be very close to the vibrant City of Edinburgh

What you should know...

- There is plenty of parking at the house should you want to invite others to join you for a celebration
- One of the bedrooms offers a trundle bed which can be set up as two singles. There is also a sofa bed that you are welcome to use
- The list of entertainment is very good with Netflix, Amazon Prime, football nets, a basketball hoop, tennis nets and a swing on the list

Terms & Conditions

- Security deposit: £500 charged to client's credit card before arrival and refunded two weeks after departure, subject to full inspection
- Arrival time: 4:00 PM
- Departure time: 11:00 AM
- Energy costs included?: Yes, included in the rental price
- Heating costs included?: Yes, included in the rental price
- Linen & towels included?: Yes, included in the rental price
- End of stay cleaning included?: Extra £125, paid locally. However, guests are required to leave the accommodation clean, tidy and in the same condition as on their arrival. Any extra cleaning, laundry, maintenance and/or garbage disposal required will be charged against the security deposit
- Internet access?: Wi-Fi internet access included
- Minimum stay: 2 nights. All other durations on request
- Changeover day: Monday or Friday
- Pets welcome?: Not allowed
- Smoking Allowed?: Smoking & Vaping are not permitted
- Insurance: Guests are required to be in possession of a valid insurance policy, which covers them for cancellations, loss of personal belongings, personal liability and any accidental damage caused during their stay