

# Apartment Lya

Region: Paris Sleeps: 2 - 4

## Overview

In the historic heart of Paris, nestled amongst some of the city's most scenic sights, you'll find Apartment Lya. Sleeping up to 4 guests, Apartment Lya is a cosy flat with a mezzanine, two double beds and a bathroom. It's located on the ground floor of a building with a small flight of stairs, so you won't have far to take your luggage before being able to relax and unpack!

Apartment Lya boasts an open-plan living and dining space with all the modern amenities you'll need for your stay. It is decorated with elegant white furnishings, immaculate wooden flooring, and soft brown sofas, giving this apartment a more rustic and cosier feel. A breakfast bar complements this homely space, meaning you can all spread out on the stools and sofa, enjoying a leisurely pastry and coffee in the morning before heading out.

From the living area, doors open onto a stunning terrace, leading to your scenic garden peppered with trees and greenery. This is a top selling point of the apartment and a little sanctuary to relax in after a long day on your feet. Returning to the interior, a staircase leads you up to the mezzanine, where you'll find the bedroom, complete with a cosy double bed and simple yet elegant furnishings. You'll also find another double bed lined with a white storage unit for you to unpack and feel at home. It's a cosy space, so taller guests should be aware; you can't stand up in the mezzanine!

The bathroom is colourfully designed, adding a vibrant edge to the more neutral shades in the apartment. The red adds an elegant dash of romance, and you'll find some spacious bathroom drawers, a shower and toilet, and a washing machine for added convenience. Some toiletries are also provided, enabling you to have a much-needed pamper in your gorgeously modern bathroom.

Location-wise, your apartment is located in the historical centre of Paris and practically neighbours the River Seine, a magnificent 777-kilometer-long river running through the city. On a sunny morning, before the excitable rush of your busy itinerary begins, you'll adore a gentle stroll along the banks of the river, enjoying the wonderful scenery of sights, including the historic Saint-Chappelle.



## Facilities

City Homes & Apartments • Easy By Train • Ideal for Kids • Ideal for Teens  
• Walk to Village • Walk to Restaurant • <1hr to Airport • Coffee Machine  
• Hairdryer • TV • Heating • Walking/Hiking Paths • Wine Tasting •  
Cycling • Outdoor Pursuit & Activities • Tourist Towns & Villages •  
Historical Sites • Romantic • Boat Trips

# Interior & Grounds

## The Apartment

City apartment, spread across two levels, with one bathroom and two double beds on a mezzanine:

### Ground Floor

- Open plan living space
- Fully equipped kitchen
- Breakfast bar
- Terrace with small garden, table, and patio

### First Floor (Mezzanine)

- Two double beds with storage space
- Bathroom with WC and shower

## Additional Facilities

- Fridge/Freezer
- Microwave
- Cooking utensils
- Oven
- Toaster
- Dishwasher
- Dryer
- Washing machine
- Hangers
- Wi-Fi
- Coffee machine
- Cutlery and crockery
- Kettle
- Heating
- Toiletries
- Fresh sheets and towels
- Hairdryer
- Flat-screen TV
- Satellite TV
- Carbon monoxide detector
- Smoke detector
- Garden view





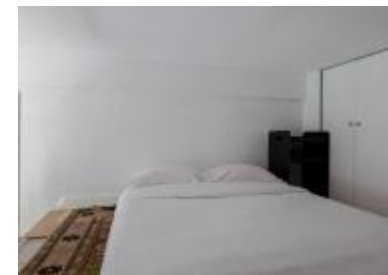
## Location & Local Information

Located in an idyllic spot within walking distance of the River Seine, Apartment Lya is also near the Luxembourg Gardens. A simply majestic spot, the Gardens were created in 1612 by Marie de Medici and span 60 acres. A nature lover's heaven, you'll find a luscious garden, a splendid fountain, and a large pond surrounded by elegant sculptures. Photographers will be keen to get some gorgeous shots of this unmissable scenery. History buffs will enjoy taking a tour of the Palace of Luxembourg. At the same time, art lovers will be keen to visit the Orangerie Museum, where you can see a fascinating collection of Monet's Water Lilies.

Architecture lovers will fall in love with the Sainte-Chapelle, a Gothic-style chapel in the heart of Paris. The monument epitomises grandiosity and spirituality with its magnificent stained-glass windows displaying epic biblical scenes. You'll also find the Notre Dame, the Conciergerie and the Pont Neuf within walking distance of the iconic chapel. Boasting incredible architecture and unparalleled beauty, you won't want to miss any of these sights. One of the most renowned examples of French Gothic architecture, a fire tragically broke out at Notre Dame in 2019 while extensive efforts have been underway to restore it. Located on the Île de la Cité, you can also learn about the fascinating history of the Conciergerie, a former palace turned prison that played an essential role in the French Revolution. The Pont Neuf is a historic bridge in the city centre. Meaning 'New Bridge' in English, it's the oldest bridge across the River Seine in Paris. It offers an epic opportunity to absorb the scenic views and take some enviable skyline snaps.

If you fancy a day trip further afield, you should visit the Palace of Versailles, located about 20km outside Paris and accessible by train or tour bus. Boasting extraordinary grounds, the top highlights of the Palace include the famous Hall of Mirrors and gorgeous gardens spanning over 800 hectares. Returning to the city centre, architecture lovers will also be wowed by the Sacré-Cœur Basilica, a Roman Catholic church situated in the vibrant Montmartre district. Known for its stunning dome, you'll witness more panoramic city views here.

Heading to some of the most touristic spots in the city, the Arc de Triomphe is a famous monument located at the western end of the Champs-Élysées. Constructed in honour of those who fought and died during the French Revolution and Napoleonic Wars, you can learn all about the poignant history of the site. It's also easily accessible via the Charles de Gaulle-Étoile metro station.



You must visit the historic heart of Paris and the wondrous Eiffel Tower! The monument has become synonymous with Paris and is a must-see tourist attraction. The atmosphere during the day is unmissable, and it makes for quite the unforgettable, romantic experience at night! Once you've taken in the views, you can enjoy a picnic in the surrounding lush green space, entertained by the cheerful bustle of tourists and street performers.

Many great dining options are located near and around the Eiffel Tower, including Le Champ de Mars and Le Suffren, a more casual brasserie-style restaurant serving traditional, delicious French cuisine. Of course, no foodie experience would be complete without tasting a vast array of Paris' famed baked goods, and there are gorgeous bakeries and patisseries spread across the entire city. Some of the most highly recommended include the Boulangerie Bo, which offers unique flavours in the trendy Marais district, and Blé Sucré, located in the 12th arrondissement and renowned for its divine croissants! Bon appétit!

### Local Amenities

Nearest Airport	<b>Paris Charles de Gaulle Airport (35.7 km)</b>
Nearest Train Station	<b>Saint-Michel Notre-Dame (400 m)</b>
Nearest Town/City	<b>Paris (0 km)</b>
Nearest Restaurant	<b>Le Bistro des Augustins (50 m)</b>
Nearest Bar/Pub	<b>The Great Canadian Pub (75 m)</b>
Nearest Supermarket	<b>Franprix (450 m)</b>

## What we love

- We loved the cosy feel of Apartment Lya. We spent most of the day out and about, so it was nice to return to our little hideaway with all the amenities we needed
- The location of our apartment was pretty priceless. We went for morning walks along the Seine and fetched some croissants from a local bakery- a simply sumptuous experience
- It was fantastic being within walking distance of so many attractions, and there is such variety. Whether you're an art lover, a history buff, or simply there for the great cuisine, this city has something for everyone

## What you should know...

- Although the apartment is technically on the ground floor, there is a flight of stairs, so it may not be suitable for those with reduced mobility
- Please note that while there are two double beds, they share the same mezzanine- useful to know when you are planning sleeping arrangements! Please also note that you can't stand up in the mezzanine
- We recommend that you plan a thorough itinerary in advance of your trip. Paris is a packed city all year long and queues can be long, so book tickets for attractions in advance to avoid disappointment

# Terms & Conditions

- Arrival time: 3:00 PM
- Departure time: Before 10:00 AM
- Energy costs included?: Yes, included in the rental price
- Heating costs included?: Yes, included in the rental price
- Linen & towels included?: Yes, included in the rental price
- End of stay cleaning included?: Extra €95 to be charged to Oliver's Travels with final balance. However, guests are required to leave the accommodation clean, tidy and in the same condition as on their arrival. Any extra cleaning, laundry, maintenance and/or rubbish disposal required will be charged against the security deposit
- Internet access?: Wi-Fi internet access included
- Minimum stay: 3 nights
- Changeover day: Flexible
- Pets welcome?: Not allowed
- Smoking Allowed?: Smoking & Vaping are not permitted
- Tax: City tax to be paid on arrival, price to be confirmed
- Insurance: Guests are required to be in possession of a valid insurance policy, which covers them for cancellations, loss of personal belongings, personal liability and any accidental damage caused during their stay