

# Hazelton Cottage

Region: Lakeside Estate **Sleeps: 6**

---

## Overview

Sometimes we all need to find a little escape and Hazelton Cottage provides just that! This lakeside hideaway offers open plan living and three spacious bedrooms, perfect for a group of six guests to enjoy all that Dorset and the Lakeside Estate have to offer. Whether you are out exploring or snuggling by the fire watching the wildlife from a swaddle of blankets, this modern cottage is the perfect respite from a busy day to day life, the perfect chance to rest and re-charge.

The Lakeside Estate has an amazing variety of activities to keep everyone entertained, with cycling, swimming and tennis, as well as the more indulgent experience of time at the Spa and poolside bar! Access to bikes, canoes, kayaks, and stand-up paddle boards are also available at an additional cost.

Hazelton Cottage has been designed with its luscious surroundings in mind, with every window making the most of the beautiful lakeside views. The ground floor features a flowing open plan living space, where you can gaze out to the glistening lake surface whether cooking in the kitchen, dining around the table or curled up on the sofas. The living area benefits from wrap-around floor-to-ceiling windows, and direct access to the outdoor terrace; our favorite spot for sitting and relaxing with a chilled glass of wine or morning coffee with the lake stretching out ahead of you. The kitchen is modern, yet offers a charming, homely feel and is perfectly equipped for families or small groups. The ground floor also features a cloakroom.

On the upper floor there are three bedrooms, a family bathroom, and a modern en-suite. The master bedroom boasts a beautiful open eave design with large sliding windows giving views over the lake. It is a real joy to spend time in this room, and the light, spacious en-suite features a walk-in shower for your privacy. The other two bedrooms offer flexibility for most groups with a double bed in one guest room and a double bed with a single bunk on top in the other. The family bathroom features a bath and a shower.

Hazelton Cottage and the Lakeside Estate act in harmony as a true celebration of nature. From dazzling views to outdoor active adventures, there is no end to the fun you can have in these beautiful surroundings.



## Facilities

Cottage • Modern • Ideal for Babies & Toddlers • Laptop Friendly  
Workspace • BBQ • Hairdryer • TV • Heating • Rural Location • Tourist  
Towns & Villages

# Interior & Grounds

Hazelton Cottage is a pretty lakeside hideaway, located in the Lakeside Estate. There are 3 bedrooms and 2 bathrooms, and it can accommodate up to 6 people.

## *Ground Floor*

- Fully equipped, open-plan kitchen with island
- Dining area for six guests
- Living room with ceiling-hung TV, wood burner and access to outdoor terrace
- Cloakroom

## *First Floor*

- Master bedroom with king-size bed and en-suite shower room and lake views
- Bedroom with double bed
- Bedroom with double bed and single bunk
- Family bathroom with bath and shower

## *Exterior Grounds*

- Decking
- Outdoor lounge furniture
- Private parking for 2 cars

## **Additional Facilities**

- Wi-Fi
- TV
- Underfloor heating
- Woodburning fire
- Communal barbecue
- Use of Estate spa and outdoor swimming pool
- Travel cot & highchair available on request





## Location & Local Information

The dramatic Jurassic coastline plays protector to the wild heathlands and rolling dales of beautiful Dorset. It is no wonder that this captivating area has enticed filmmakers, poets, authors and artists for centuries, with visitors allured by the sweeping golden beaches, grand historic houses, cobblestone market towns and idyllic country pubs.

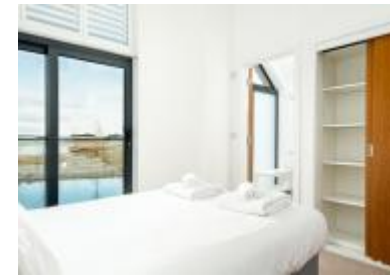
All around the Lakeside Estate and scattered down the Jurassic Coast there are picturesque towns to visit. From the breezy coastal town of Poole to the rich history of Dorchester and the picture postcard vistas of Lyme Regis. The Estate itself is located amidst the rugged beauty of this area, in the environs of West Dorset. Formerly the site of RAF Warmwell, the Estate boasts a rich history, offering a breath-taking space combining unspoilt nature, beautiful wildlife, and modern luxuries, so you can leave all worries behind, settling in for a holiday of complete relaxation.

Enjoying the great outdoors is all part of a stay at the Lakeside Estate, with waterways to discover, cycle pathways to relish and the rolling Dorset Countryside to explore. Whether you want to hop in a kayak, canoe, paddleboard or bike, there is something for everyone, it is a real hub of activity! The Estate's tennis court and 3G artificial-turf Multi Use Games Area (MUGA) in Beaumont Village offer the perfect facilities for a quick knock-about or a lively game of five-a-side football with friends and family. The views from the courts over Beaumont Lake are gorgeous, making for a tricky distraction when you are trying to hit a winning shot!

Lowland heathland is one of Britain's most important habitats for wildlife conservation. The outer Heath is a SNCI (Site of Nature Conservation Interest) and it supports an unbelievable range of plants, birds, insects and mammals making it a remarkable place for wildlife spotting. For those eager to get close to nature, there are hundreds of acres to explore, with woodlands and hedgerows sheltering this diverse array of native wildlife. You can explore down the waterways, or by foot or bike making the most of the vast network of private footpaths.

After a busy day immersed in nature, the Estate Spa is the perfect respite. The spa has been designed to offer a tranquil sanctuary of stress-free indulgence and ultimate relaxation! There is an outdoor pool, roof terrace, sauna, gym, library and a 'restful relaxation' lounge for some post treatment 'you' time. In the peaceful, candlelit treatment rooms you can enjoy an array of luxurious treatments.

Of course, no holiday is complete without a satisfied appetite. Your holiday home offers its own kitchen for home cooked delicacies, or for a night off, there are plenty of options within the Estate and in the surrounding towns. The Hurricane Terrace and Bar is located on the roof terrace of the spa, offering



bespoke cocktails inspired by the area and a variety of snacks and small plates if you are feeling peckish. The Estates traditional handmade yurt offers the perfect spot for a lazy afternoon, with an outdoor woodfired pizza oven which is often fired up by expert chefs to provide the tastiest authentic woodfired pizza using the freshest local ingredients. Hours will idle by, as you play bored games, tell stories, and get cosy by the log burning stove!

## Local Amenities

---

Nearest Airport	<b>Southampton Airport (51.8 miles)</b>
Nearest Village	<b>Crossways (Walking Distance)</b>
Nearest Town/City	<b>Dorchester (6 miles)</b>
Nearest Restaurant	<b>The Wise Man Inn (3.3 miles)</b>
Nearest Beach	<b>Man O'War Beach (8.1 miles)</b>
Nearest Golf	<b>Came Down Golf Club (7.7 miles)</b>
Nearest Train Station	<b>Moreton (1.6 miles)</b>
Nearest Supermarket	<b>Waitrose &amp; Partners Dorchester (5.9 miles)</b>

---

## What we love

- With hundreds of acres of outstanding natural habitats, the outdoor explorations are endless at The Lakeside Estate!
- The Estate Spa offers a tranquil sanctuary of stress-free indulgence and ultimate relaxation!
- The house has access to a number of "resort" style facilities (spa, children's playground, outdoor pool and more)

## What you should know...

- There are still properties and areas of the island that are undergoing final elements of construction, so whilst Hazelton Cottage is fully completed, it is possible that you may see construction, machinery and workers on or around the island between 0800 and 1600, Monday to Friday
- While the house is brilliant for family holidays, young children might need supervision to explore the grounds due to the open nature of the area
- Please be aware there are no water-based activities between November and February for health and safety reasons
- Onsite access to water sports equipment and bikes are only available to guests staying at properties with an 'Activity Hub Membership', which Hazelton Cottage does not have. At this time, casual hire of equipment is not available onsite, however guests may bring their own. Access to bikes, canoes, kayaks, and stand-up paddle boards are available, but at an additional cost

# Terms & Conditions

- Security deposit: Bookings are subject to a £500 refundable damage deposit
- Arrival time: 16:00 - 00:00
- Departure time: 10:00
- Energy costs included?: Yes, included in the rental price.
- Linen & towels included?: Yes, included in the rental price.
- Pets welcome?: No pets allowed.
- End of stay cleaning included?: Yes, included in the rental price.
- Smoking Allowed?: No smoking.
- Heating costs included?: Yes, included in the rental price.
- Internet access?: Yes, Wi-Fi included in the rental price.
- Other Ts and Cs: A travel cot & highchair are available on request, please bring your own cot linen.