

# Huxley House

Region: Lakeside Estate Sleeps: 6

---

## Overview

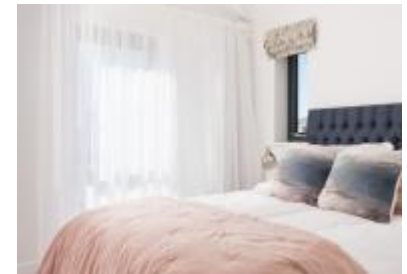
Holidays are best spent appreciating what is most important, friends and family. Huxley House has been designed with this in mind, offering two floors of spacious family living, flooded with natural light. This modern holiday home sits within the outstanding landscape of Dorset's Lakeside Estate. Offering access to the Hurricane Spa and rooftop bar, you can enjoy all the privacy and independence of a private holiday rental, yet all the benefits of a resort style setting.

Situated between Dorchester and the beautiful Lulworth Cove, the Lakeside Estate sits at the heart of Dorset's Jurassic Coast, with breath-taking scenery and vibrant nature stretching out in every direction you look.

The ground floor of the villa is bright and open, filled with contemporary furnishings that look like they were pulled out of a design magazine. This cohesive design allows the layout of the kitchen, dining area and lounge to flow within the room, encouraging social living, where conversation and laughter fill every corner of the space. The kitchen is fully equipped, with all the appliances and utensils you might need to cook fabulous group meals, keeping you energised through all the outdoor activities on offer. There is a small garden and decking area accessed by elegant bi-fold doors that lead out from the living area, as well as a whole world of vibrant nature to explore beyond.

Upstairs, the three bedrooms maintain the modern aesthetic found throughout the house. The master bedroom boasts a king-size bed and an en-suite shower room for privacy. The second bedroom offers another king-size bed, and the final bedroom is furnished with bunk beds. Both rooms share the large family bathroom.

The entire Lakeside Estate and its surrounding area are a celebration of nature, with woodlands, heathlands and rolling countryside creating vibrant habitats for beautiful wildlife. With access to bikes, canoes, kayaks, and stand-up paddle boards available at an additional cost during your stay, you can combine fun and adventure into every aspect of your holiday, which we are sure will have your whole family wanting to return year on year!



## Facilities

Villa/House • Modern • Shared Pool • Ideal for Babies & Toddlers • Ideal for Kids • Ideal for Teens • Wi-Fi/Internet • Tennis Court • Satellite TV • Bicycles Provided • Working Fireplace/Woodburner • Canoeing/Kayaking • Rural Location • Walking/Hiking Paths • Golf Nearby • Tennis Nearby • Cycling • Outstanding Landscapes • Outdoor Pursuit & Activities • Tourist Towns & Villages • Historical Sites

# Interior & Grounds

## *Ground Floor*

- Open-plan living area
- Fully-equipped kitchen with dining facilities

## *First Floor*

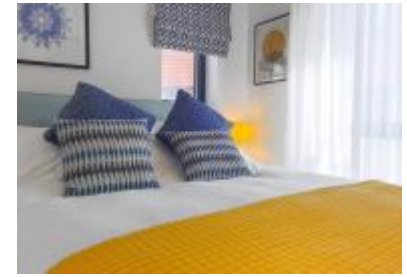
- Bedroom with king-size bed and en-suite shower room
- Bedroom with king-size bed
- Bedroom with bunk beds
- Family bathroom

## *Exterior Grounds*

- Decking
- Dining facilities
- Barbecue

## **Additional Facilities**

- Wi-Fi
- TV
- Travel cot & highchair available on request
- Use of Estate spa and outdoor swimming pool
- Type-2 electric car charging point



## Location & Local Information

The dramatic Jurassic coastline plays protector to the wild heathlands and rolling dales of beautiful Dorset. It is no wonder that this captivating area has enticed filmmakers, poets, authors and artists for centuries, with visitors allured by the sweeping golden beaches, grand historic houses, cobblestone market towns and idyllic country pubs.

All around the Lakeside Estate and scattered down the Jurassic Coast there are picturesque towns to visit. From the breezy coastal town of Poole to the rich history of Dorchester and the picture postcard vistas of Lyme Regis. The Estate itself is located amidst the rugged beauty of this area, in the environs of West Dorset. Formerly the site of RAF Warmwell, the Estate boasts a rich history, offering a breath-taking space combining unspoilt nature, beautiful wildlife, and modern luxuries, so you can leave all worries behind, settling in for a holiday of complete relaxation.

Enjoying the great outdoors is all part of a stay at the Lakeside Estate, with waterways to discover, cycle pathways to relish and the rolling Dorset Countryside to explore. Whether you want to hop in a kayak, canoe, paddleboard or bike, there is something for everyone, it is a real hub of activity! The Estate's tennis court and 3G artificial-turf Multi Use Games Area (MUGA) in Beaumont Village offer the perfect facilities for a quick knock-about or a lively game of five-a-side football with friends and family. The views from the courts over Beaumont Lake are gorgeous, making for a tricky distraction when you are trying to hit a winning shot!

Lowland heathland is one of Britain's most important habitats for wildlife conservation. The outer Heath is a SNCI (Site of Nature Conservation Interest) and it supports an unbelievable range of plants, birds, insects and mammals making it a remarkable place for wildlife spotting. For those eager to get close to nature, there are hundreds of acres to explore, with woodlands and hedgerows sheltering this diverse array of native wildlife. You can explore down the waterways, or by foot or bike making the most of the vast network of private footpaths.

After a busy day immersed in nature, the Estate Spa is the perfect respite. The spa has been designed to offer a tranquil sanctuary of stress-free indulgence and ultimate relaxation! There is an outdoor pool, roof terrace, sauna, gym, library and a 'restful relaxation' lounge for some post treatment 'you' time. In the peaceful, candlelit treatment rooms you can enjoy an array of luxurious treatments.

Of course, no holiday is complete without a satisfied appetite. Your holiday home offers its own kitchen for home cooked delicacies, or for a night off, there are plenty of options within the Estate and in the surrounding towns. The Hurricane Terrace and Bar is located on the roof terrace of the spa, offering



bespoke cocktails inspired by the area and a variety of snacks and small plates if you are feeling peckish. The Estates traditional handmade yurt offers the perfect spot for a lazy afternoon, with an outdoor woodfired pizza oven which is often fired up by expert chefs to provide the tastiest authentic woodfired pizza using the freshest local ingredients. Hours will idle by, as you play bored games, tell stories, and get cosy by the log burning stove!

### Local Amenities

---

Nearest Airport	<b>Southampton Airport (51.8 miles)</b>
Nearest Village	<b>Crossways (Walking Distance)</b>
Nearest Town/City	<b>Dorchester (6 miles)</b>
Nearest Restaurant	<b>The Wise Man Inn (3.3 miles)</b>
Nearest Beach	<b>Man O'War Beach (8.1 miles)</b>
Nearest Golf	<b>Came Down Golf Club (7.7 miles)</b>
Nearest Train Station	<b>Moreton (1.6 miles)</b>
Nearest Supermarket	<b>Waitrose &amp; Partners Dorchester (5.9 miles)</b>

---

## What we love

- With hundreds of acres of outstanding natural habitats, the outdoor explorations are endless at The Lakeside Estate!
- The Estate Spa offers offer a tranquil sanctuary of stress-free indulgence and ultimate relaxation!
- The home benefits from a type 2 electric car charging point

## What you should know...

- While the house is brilliant for family holidays, young children might need supervision to explore the grounds due to the open nature of the area
- Please be aware there are no water-based activities between November and February for health and safety reasons
- Access to bikes, canoes, kayaks, and stand-up paddle boards are available, but at an additional cost

# Terms & Conditions

- Security deposit:
- Arrival time: 4pm
- Departure time: 10am
- Energy costs included?: Yes, included in the rental price.
- Linen & towels included?: Yes, included in the rental price.
- Pets welcome?:
- End of stay cleaning included?: Yes, included in the rental price.
- Smoking Allowed?: No smoking.
- Heating costs included?: Yes, included in the rental price.
- Internet access?: Yes, Wi-Fi included in the rental price.
- Other Ts and Cs: A travel cot & highchair can be provided on request, please bring your own cot linen