

Northborough Manor Gatehouse

Region: Midlands Sleeps: 8

Overview

Northborough Manor Gatehouse holds a wonderful location set within beautiful Cambridgeshire countryside close to its border with Lincolnshire in the village of Northborough. While guests will enjoy a tranquil escape, a wide variety of amenities and attractions can be found in the cathedral city of Peterborough or the nearby town Stamford, both just a fifteen-minute drive away.

The Grade I listed Gatehouse makes an entirely unique place to stay, steeped in history the building was used as a garrison by Oliver Cromwell during the Civil War. The home has been lovingly and carefully modernised in order to seamlessly combine its original charm and character including intricate stonework, hand carved 700-year-old beams, and cannon holes with all the modern amenities guests could possibly need. The interiors are beautiful throughout with pieces of antique furniture and artwork dating from the 17th, 18th and 19th centuries. There is plenty of living space for the whole group to socialise in, the drawing room is cosy and the perfect place to unwind in the evenings, the fully-equipped kitchen boasts all the tools you could possibly need to whip up a delicious meal while the dining room complete with its 18th century Gillows table makes the perfect place to the whole group to gather and discuss the highlights of the day. Northborough Manor Gatehouse can comfortably accommodate up to eight guests across four well-appointed bedrooms. There are three double rooms each boasting en-suite facilities, while the twin bedroom can make use of the luxurious family bathroom.

Outside, the courtyard makes the perfect setting for a spot of al fresco dining on a Summer evening. The Orchard makes an excellent space for a game of croquet while the Italian Garden is ideal for relaxing in.

Facilities

Quirky • Great Value • **Recommended** • **Exclusive** • Heritage Collection
• Ideal for Kids • Ideal for Teens • Wi-Fi/Internet • Walk to Village •
Walk to Restaurant • Satellite TV • Heating • Not for little ones • Rural
Location • Walking/Hiking Paths • Outstanding Landscapes • Outdoor
Pursuit & Activities • Tourist Towns & Villages • Historical Sites • Romantic



Interior & Grounds

Ground Floor

- Drawing room
- Fully-equipped kitchen with large island and dining facilities for 8
- Dining room with 18th century Gallows dining table and seating for 8

First Floor

- Bedroom with king-size four poster bed and en-suite bathroom
- Bedroom with double bed and en-suite shower room
- Bedroom with double bed and en-suite shower room
- Bedroom with twin single beds
- Family bathroom with luxury Burlington bath

Exterior Grounds

- Courtyard with dining furniture
- Italian garden
- Orchard

Additional Facilities

- Wi-Fi
- TV with Netflix & NOW TV
- Selection of books & games
- Laundry facilities
- Parking for 3 cars



Location & Local Information

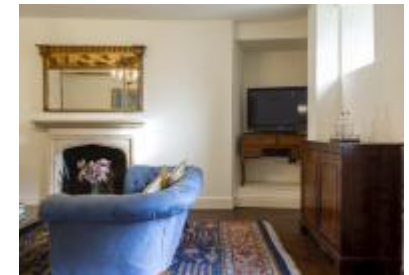
Northborough Manor Gatehouse is situated in the village of Northborough, set within Cambridgeshire close to the border with Lincolnshire. Northborough boasts helpful amenities including a gastropub, a small supermarket and a post office. A wider variety of amenities can be found in the market town of Market Deeping which is just a 5-minute car journey away.

There is plenty to see, do and explore within the surrounding area. The city of Peterborough complete with its impressive Cathedral is just a 15-minute drive away. Ferry Meadows is one of the largest parks in the area and makes a wonderful location for a family day out with its three play areas, café and range of watersports on offer for visitors to try out, all just 20-minutes from Northborough. The whole group are bound to enjoy a nostalgic steam train ride on the Nene Valley Railway, which runs alongside the River Nene from Wansford (20-minutes away) to Peterborough and back again!

Just 15-minutes away and over the border in Lincolnshire is the town of Stamford, described as one of the finest Georgian towns in England, it is well worth a visit. Burghley House, one of the grandest surviving houses of the 16th century, is less than 30-minutes away, its beautiful gardens make for a lovely day out during the Summer months. Those looking to enjoy the great outdoors will enjoy a visit to the serene Rutland Water, just 40-minutes away and perfect for a cycle or walk!

Local Amenities

Nearest City	Peterborough (10.7km)
Nearest Town	Market Deeping (3.8km)
Nearest Village	Northborough (500m)
Nearest Restaurant	The Pack House, Northborough (500m)
Nearest Supermarket	Tesco Superstore, Market Deeping (4.5km)
Nearest Golf	Thorpe Wood Golf Course (11.9km)



What Oliver loves...

- Steeped in fascinating history, this is a holiday home like no other!
- Three of the bedrooms feature en-suite facilities which makes this an ideal choice for couples holidaying together who wish to retain an element of privacy
- The closest gastropub, The Pack Horse, is conveniently situated within walking distance!

What you should know...

- Given the age of the house, it is not well suited to those travelling with young children. There are trip hazards and all of the floors are hard while the house is also furnished entirely with antique furniture
- Due to the house being Grade 1 listed, it is impossible to make it wheelchair accessible. We regret that there is no accommodation on the ground floor.

Terms & Conditions

- Security deposit: £1500 charged to client's credit card before arrival and refunded two weeks after departure, subject to full inspection.
- Arrival time: 4pm
- Departure time: 10am
- Energy costs included?: Yes, included in the rental price
- Linen & towels included?: Yes, included in the rental price
- End of stay cleaning included?: Yes, included in the rental price
- Internet access?: Yes, Wi-Fi is included in the rental price
- Changeover day: Friday
- Minimum stay: Please note that there is a 3-night minimum stay, this may be increased across peak dates
- Pets welcome?: No pets
- Smoking Allowed?: No smoking
- Other Ts and Cs: Please note that due to the age of the house and the furnishings and artworks throughout, it is not suited to those travelling with young children.
- Other 2: No stag do's, hen do's or parties are permitted.